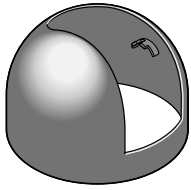


Panasonic



Inner Cover Instructions

Model No. **WV-Q153**

Before attempting to connect or operate this product, please read these instructions carefully and save this manual for future use.

Features

This product is an inner cover that is exclusively designed to be used with the network cameras, WV-NS202 and WV-NS202A.

Installations

Be sure to read "Precautions" before installation.

How to engage the inner cover

Slide the covers located on the both lateral sides of the camera and put the inner cover on the camera until the hooks inside the inner cover are engaged in the holes of the camera (until a click is heard).

Important:

- Put the inner cover down on the camera until the outside cover of the camera cannot be seen from the opening (from which the camera lens is visible) of the inner cover. If this engagement work is not successfully performed, the inner cover may be removed or the hidden part at the top of the screen may become larger in the wide mode.
- When the camera, WV-NS202 or WV-NS202A, with this product and an outdoor dome housing equipped is mounted, the clearance between this product and the housing shall be 2 mm or more.



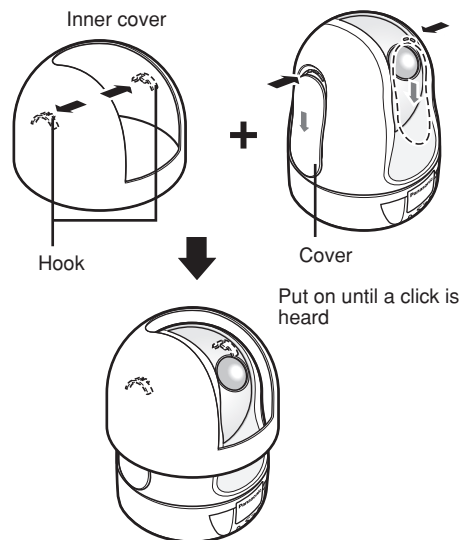
Precautions

- **Refer installation work to the dealer.**

Installation work requires skills and experiences. Failure to observe this may cause fire, electric shock, injury, or damage to the product. Be sure to consult the dealer.

- **Be sure to engage the inner cover onto the camera main body before installation of the camera main body.**

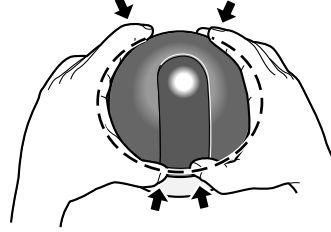
Failure to observe this may cause a drop resulting in injury or accidents.



How to remove the inner cover

- Press the inner cover from the front and rear sides inward (at the same vertical position as the hooks) to bend the cover and remove the inner cover from the camera.

Press from the front and rear sides inward to bend



Specifications

Ambient temperature	-10 °C to +50 °C
Dimensions	Diameter 118 mm
Height	80.2 mm
Weight	approx. 50 g

Standard Accessories

Operating Instructions (this document).....	1 pc.
---	-------

For U.S., Canadian and Puerto Rican fields:

Panasonic System Solutions Company,
Unit Company of Panasonic Corporation of North America
Security Systems

www.panasonic.com/security

For customer support, call 1.877.733.3689

Executive Office: Three Panasonic Way 2H-2, Secaucus,
New Jersey 07094

Zone Office

Eastern: Three Panasonic Way, Secaucus, New Jersey 07094

Central: 1707 N. Randal Road, Elgin, IL 60123

Southern: 1225 Northbrook Parkway, Suwanee, GA 30024

Western: 6550 Katella Ave., Cypress, CA 90630

Panasonic Canada Inc.

5770 Ambler Drive, Mississauga,

Ontario, L4W 2T3 Canada (905)624-5010

<http://www.panasonic.ca>

Panasonic Sales Company

Division of Panasonic Puerto Rico Inc.

San Gabriel Industrial Park 65th Infantry Ave. KM. 9.5 Carolina

P.R. 00985(809)750-4300

For European and other fields:

Matsushita Electric Industrial Co., Ltd.

Osaka, Japan

<http://panasonic.net>